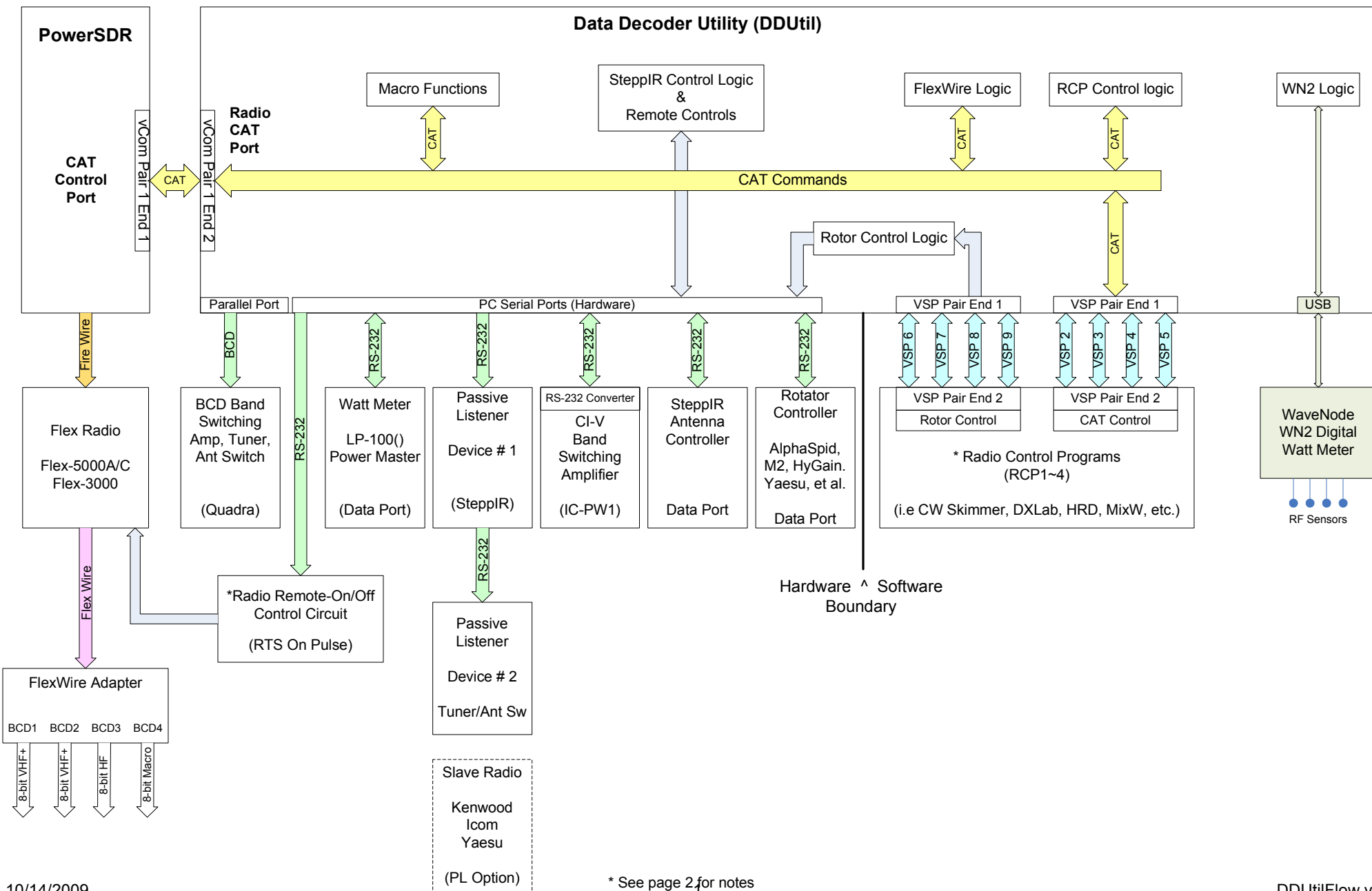


DDUtil Data Flow



Program Notes:

Master Radio Control Port (Important)

If one or more Radio Control Programs (RCPs) are used, the first and most important of these programs **must** be attached to the Master RCP 1 port. This program must poll the radio for data or **DDUtil** will function erratically. Typically, a logging program like DXLab or HRD would attach to this port as they perform this polling duty regularly and reliably. Many programs don't poll at all and only send commands when they want to change frequency or mode (DXBase) and these must be avoided being attached to RCP1. After the first program is attached to RCP1, other programs may be attached in any order desired.

Passive Listener

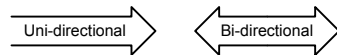
This is broadcast data only, these devices **CAN NOT** talk back to the radio. Multiple Passive Listener devices may be connected in parallel.

Slave Radio

As an alternative or additionally a slave radio may be used as a passive listener device. This would be desirable if there is no transmitter capability in the SDR. Such as an old SDR-1000 three board stack or one of the Soft Rock radios.

Other

VSP (Virtual Serial Port)



The Radio On/Off function requires modification to the radio and an auxiliary hardware circuit to detect the RTS pulse. See http://k5fr.com/ddutilwiki/index.php?title=Remote_On for more info.

See program documentation for additional information. <http://k5fr.com/ddutilwiki/>