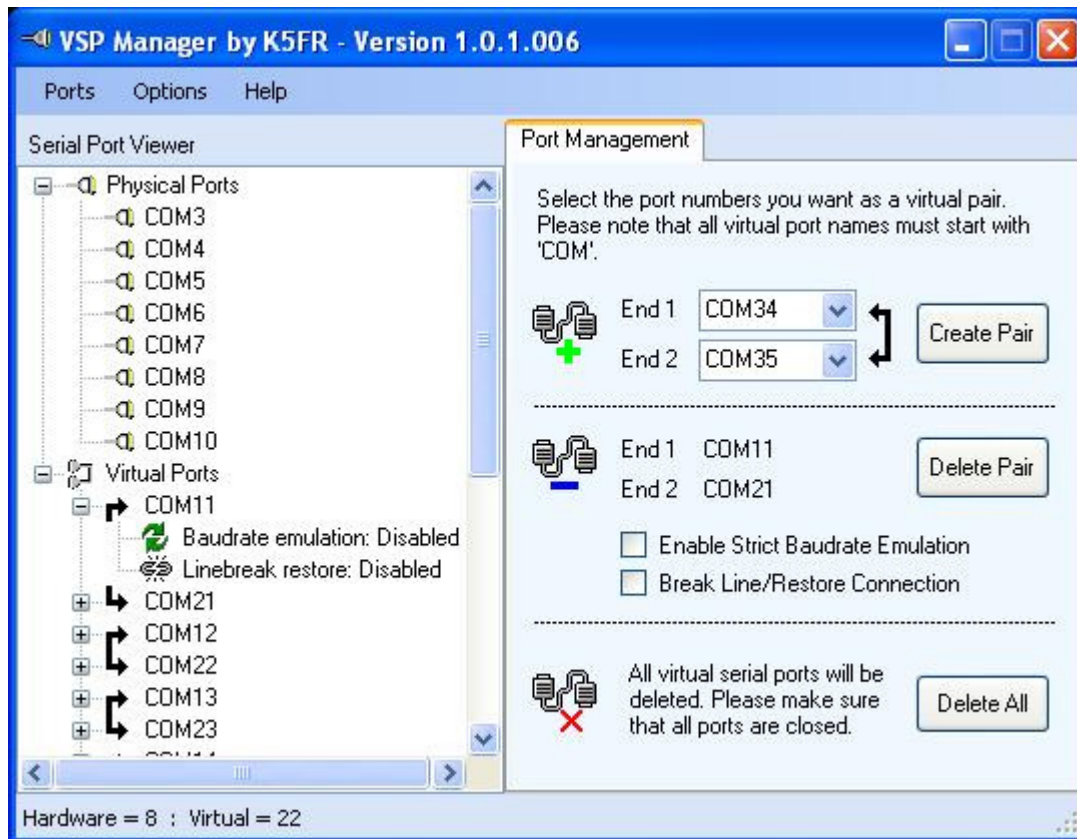


# VSP Manager



## Features

- Displays all serial ports (hardware & virtual) on your PC.
- Create any number of virtual serial port pairs up to 128.
- **Baud Rate Emulation** is supported for all virtual ports.
- **Break Line Restore** is supported for all virtual ports.
- All Windows operating systems are supported (Win2K ~ Win7).

## Installation

### **Please Note:**

The following actions must be accomplished in sequential order for the **VSP Manager** installation to be successful.

1. Delete **ALL** virtual ports installed by other virtual serial port programs (vCom, com0com, VSPE, etc.) and then un-install the vsp program(s) themselves. This is mandatory as **VSP Manager** will not recognize them and conflicts may occur.
2. Download the **VSP Manager** setup file (vspMgrSetup.zip).
3. Execute (double-click) the **setup.exe** file.
4. Select the directory where you want **VSP Manager** installed.  
**Note:** 64 bit systems must **NOT** use the C:\Programs Files\ directory. It is suggested to use the C:\vspMgr\ directory which is the installer default.
4. Follow the installer prompts to complete the installation.

5. You should hear a **Device Connect** sound (same as a USB connect) as the driver is installed and then a second **Device Connect** sound will be heard when the driver is ready to use. **Note** that this second sound may take up to a couple of minutes to happen depending on your PC and its load. **DO NOT** close the installer before it tells you it's finished.
6. Re-boot the PC to complete the installation process.

## Operation

- **Add a Port Pair**
  - In the upper section of the **Port Management** tab select the port numbers you wish to create using the **End 1** & **End 2** drop-down boxes.

**Note:** Clicking the **End 1** window will increment both port numbers to the next logical pair.

  - Press the **Create Pair** button.
  - The newly created port pair should appear in the **Serial Ports Viewer** window under the **Virtual Ports** tree node.
- **Delete a Port Pair**
  - In the **Serial Ports Viewer** window select one of the ports in the pair you want to delete.
  - Press the **Delete Pair** button.
  - The deleted pair should now be missing from the **Serial Ports Viewer** window.
- **Delete All Ports**
  - In the lower section of the **Port Management** tab press the **Delete All Ports** button and then press **Ok** the following message box to delete all virtual ports you have previously created with this software.
- **Enable Strict Baud Rate Emulation**

Enables the baud rate to be controlled by the software program connected to the virtual ports. See caution note below.

  - In the **Serial Ports Viewer** window select one of the ports of the pair you wish to enforce baud rate emulation on.
  - In the middle section on the **Port Management** tab check the **Enable Strict Baud Rate Emulation** check box. Unchecking this check box will disable strict baud rate emulation.
  - In the **Serial Ports Viewer** window select the + symbol next to one of the ports used in the step above and it will expand showing **Enabled** or **Disabled** next to the Baudrate emulation entry.

**Caution:** Normally, strict baud rate emulation is not required with virtual serial ports. However, some older software programs must run at a specific baud rate and that is what this feature is intended for. Unless you have to use this feature leave it disabled.
- **Break Line/Restore Connection**

Break line/restore connection option enables you to emulate physical line break, in fact this option drops all incoming signal lines (DCD, DSR, CTS, RI) and data from one port is not transferred to another.

  - In the **Serial Ports Viewer** window select one of the ports of the pair you wish to enable the set line restore feature.
  - In the middle section in the **Port Management** tab check the **Break Line/Restore Connection** check box. Unchecking this check box will disable the set line restore feature.

# VSP Manager

---

- In the **Serial Ports Viewer** window select the + symbol next to one of the ports used in the step above and it will expand showing **Enabled** or **Disabled** next to the Break Line/Restore entry.

## Operation Notes:

You will need to run **VSP Manager** as **Administrator** and in **XP Compatibility Mode** for it to function properly on **Vista** and/or **Windows 7** operating systems. To do this follow these steps:

- Right-click the **vspMgr** icon on the desktop and select properties.
- On the compatibility tab select **Run program in compatibility mode for Windows XP SP 3**
- Select **Run program as administrator** at the bottom of the form.

- There is a known problem when using DDUUtil with MixW, HRD and some other 3rd party RCP software with regards to the DTR, RTS and other signal lines. These programs default some or all the control lines to Always On or Active. These control lines must be set to Always Off or Inactive for communication to flow between the pair ports.

## Trouble Shooting

### 1. Error Messages

- **Can not create evserial service FAILURE: The specified service has been marked for deletion**

This message is non critical and indicates an **Eltima Serial Bus** is already installed on your PC, ignore the message and Re-Boot the PC to resolve the issue.

- **HRESULT 0x8007000B**

Log on as **administrator** and run vspMgr.exe in **XP** compatible mode.

- **Object Not Set**

This message can occur when there are no virtual ports yet established on the PC. Ignore this message, it's non-critical.

### 2. **VSP Manager** disappears when the **Delete All Ports** function is used.

- Reboot the PC to cure this problem.

### 3. **Data Not Flowing Between Pair Ports**

- Check the using programs port setup and make sure that the **RTS & DTR** control lines are set to **Always Off**. Many programs set these lines to **Always On** as a default.

### 4. Other

- To verify a successful driver installation go to the **Control Panel Device Manager** applet (Start\Control Panel\System\Hardware\Device Manager) and open the **System Devices** node. Near the bottom you should see an entry for **Virtual Serial Bus Enumerator (Eltima Software)**. If this entry is not there the installation failed. Also, there should have been an error message of some kind during installation.